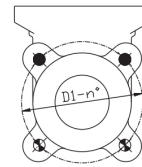


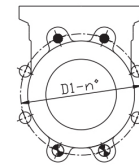
Blind-Through-Drilling Holes for Knife Gate Valves

PN10

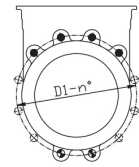
DN	D1	n°	M	T	◆	⊕	⊕
50	125	4	M-16	10	2	0	2
65	145	4	M-16	10	2	0	2
80	160	8	M-16	12	2	4	2
100	180	8	M-16	12	2	4	2
125	210	8	M-16	14	2	4	2
150	240	8	M-20	14	2	4	2
200	295	8	M-20	14	2	4	2
250	350	12	M-20	18	4	6	2
300	400	12	M-20	21	4	6	2
350	460	16	M-20	21	6	8	2
400	515	16	M-24	25	6	8	2
450	565	20	M-24	25	8	10	2
500	620	20	M-24	26	8	10	2
600	725	20	M-27	26	8	10	2
700	840	24	M-27	22	10	12	2
800	950	24	M-30	22	10	12	2
900	1050	28	M-30	22	12	12	4
1000	1160	28	M-33	22	12	12	4
1200	1380	32	M-36	33	14	14	4



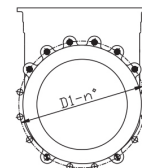
DN50-65



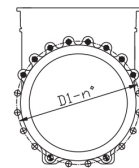
DN80-200



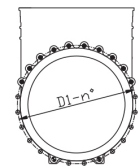
DN250-300



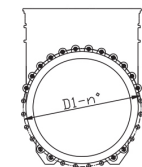
DN350-400



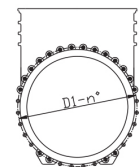
DN450-600



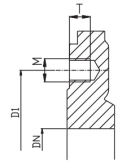
DN700-800



DN900-1000



DN1200



Blind hole tapping

- ◆ Blind hole thread
- ⊕ Through-hole
- ⊕ Drilling through

PN16

DN	D1	n°	M	T	◆	⊕	⊕
50	125	4	M-16	10	2	0	2
65	145	4	M-16	10	2	0	2
80	160	8	M-16	12	2	4	2
100	180	8	M-16	12	2	4	2
125	210	8	M-16	14	2	4	2
150	240	8	M-20	14	2	4	2
200	295	12	M-20	14	4	6	2
250	355	12	M-24	18	4	6	2
300	410	12	M-24	21	4	6	2
350	470	16	M-24	21	6	8	2
400	525	16	M-27	25	6	8	2
450	585	20	M-27	25	8	10	2
500	640	20	M-30	26	8	10	2
600	725	20	M-33	26	8	10	2
700	840	24	M-33	22	10	12	2
800	950	24	M-36	22	10	12	2
900	1050	28	M-36	22	12	12	4
1000	1170	28	M-39	22	12	12	4
1200	1390	32	M-45	33	14	14	4

150Lb

DN	D1	n°	M	T	◆	⊕	⊕
2"	120.5	4	5/8" UNC	10	2	0	2
2 1/2"	139.5	4	5/8" UNC	10	2	0	2
3"	152.5	4	5/8" UNC	12	2	0	2
4"	190.5	8	5/8" UNC	12	2	4	2
5"	216	8	3/4" UNC	14	2	4	2
6"	241.5	8	3/4" UNC	14	2	4	2
8"	298.5	8	3/4" UNC	14	2	4	2
10"	362	12	7/8" UNC	18	4	6	2
12"	432	12	7/8" UNC	21	4	6	2
14"	476	12	1" UNC	21	4	6	2
16"	540	16	1" UNC	25	6	8	2
18"	578	16	1 1/8" UNC	25	6	8	2
20"	635	20	1 1/8" UNC	26	8	10	2
24"	749.5	20	1 1/4" UNC	26	8	10	2
28"	863.5	28	1 1/4" UNC	26	10	16	2
30"	914	28	1 1/4" UNC	22	10	16	2
32"	978	28	1 1/2" UNC	22	10	16	2
36"	1085.8	32	1 1/2" UNC	22	12	16	4
40"	1200.2	36	1 1/2" UNC	30	14	18	4