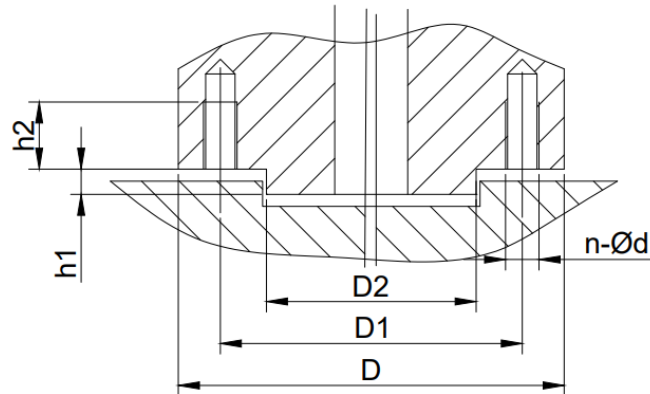


Actuator Connection Types ISO5211 / GOST55510



Selection Tables according to the torques

Types	For multi-turn actuator		For part-turn actuator
	Max Torque(Nm)	Max Axial Force(kN)	Max Torque(Nm)
MЧ	25		
MK			
AЧ	100		
AK			
Б	400		
B	1000		
Г	2500		
Δ	10000		
F03			32
F04			63
F05			125
F07	40	20	250
F10	100	40	500
F12	250	70	1000
F14	400	100	2000
F16	700	150	4000
F25	1200	200	8000
F30	2500	325	16000
F35	5000	700	32000
F40	10000	1100	63000
F48			125000
F60			250000

"Types of connections"	D	D1	D2	d	h1	h2	Number of bolts	B×B (side length)
F03	46	36	25	M5	3	8	4	9
F04	54	42	30	M5	3	8	4	9, 11
F05	65	50	35	M6	3	9	4	9, 11, 14
F07	90	70	55	M8	3	12	4	11, 14, 17
F10	125	102	70	M10	3	15	4	14, 17, 19, 22
F12	150	125	85	M12	3	18	4	17, 19, 22, 27
F14	175	140	100	M16	4	24	4	22, 27, 36
F16	210	165	130	M20	5	30	4	27, 36, 46
F25	300	254	200	M16	5	24	8	36, 46, 55
F30	350	298	230	M20	5	30	8	46, 55, 75
F35	415	356	260	M30	5	45	8	
F40	475	406	300	M36	8	54	8	
F48	560	483	370	M36	8	54	12	
F60	686	603	470	M36	8	54	20	