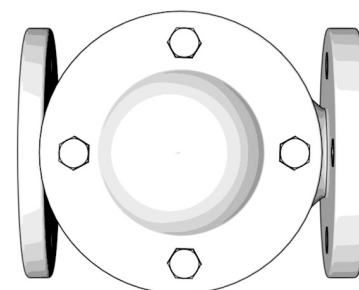
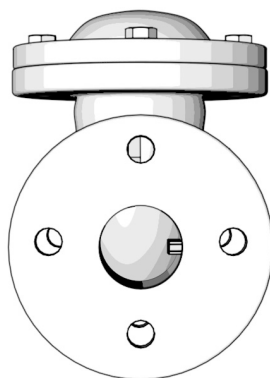
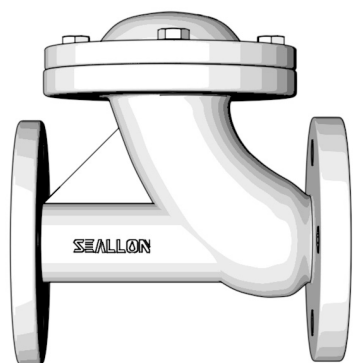


Series SC41	
Size Range	50mm~600mm (2"~24")
Body Style	Flanged
Temperature Range	-10°C~110°C
Pressure Range	1.0Mpa~1.6Mpa (Class150~600)
Body Materials	GGG40, GGG50
Ball Materials	WCB
Cover Materials	GGG40, GGG50
Seal Materials	EPDM, NBR
Installation Direction	Unidirectional
Face to Face	DIN3202 F6, EN558-1, JB/T8937
Design	JB/T8937
Flange Drilling	ASME B16.5, EN1092, GOST33259
Top connection	None
Inspection	GB/T13927, ISO5028, API598, JB/T9092

SC41
Flanged Ball Check Valve



S	C(Type)	x(Driving)	4(Connection)	1(Structure)	R(Sealing material)	-	10(Pressure)	D(Body material)
Seallon	C-check valve	x-none	4-flanged	1-lifting	R-rubber	-	10 16	D-ductile iron



DN	50	65	80	100	125	150	200	250	300	350	400	450	500	600
L (F-F, mm)	200	240	260	300	350	400	500	600	700	800	900	1000	1150	1350
Weight (kg)	9.5	12.4	16	21	32.5	41	75	117	161	213	330	420	450	690