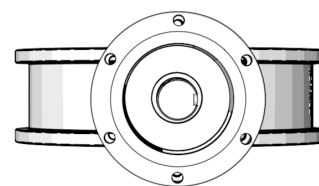
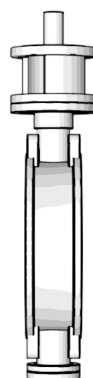
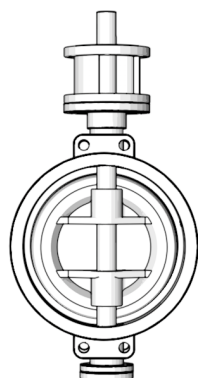


Series SB73	
Size Range	50mm~2400mm (2"~96")
Body Style	Wafer
Temperature Range	-29°C~425°C
Pressure Range	0.6MPa~6.3MPa (Class150~900)
Body Materials	WCB, LCC, LC1, WC6, CF8, CF8M, 321, 904L
Disc Materials	WCB, LC1, WC6, CF8, CF8M, 321, 316Ti, 904L, 310S
Stem Materials	420, 17-4PH, 304, 316, 321
Seat Materials	304+Graphite, EPDM, PTFE, Viton, Metal to metal
Installation Direction	Unidirectional, Bidirectional
Face to Face	GB/T12221, BS EN558-1
Design	GB/T12238, BS EN593, API609
Flange Drilling	ASME B16.5, EN1092, GOST33259, DIN2501
Top connection	ISO5211, GOST55510
Inspection	GB/T13927, ISO5028, API598, JB/T9092

SB73
Triple Eccentric Wafer
Butterfly Valve



S	B(Type)	0(Driving)	7(Connection)	3(Structure)	P(Sealing material)	-	16(Pressure)	S(Body material)
Seallon	B-butterfly valve	×-handle 0-yoke 3-gear box 6-pneumatic 9-electric	7-wafer	3-triple eccentric	R-rubber P-PTFE S-stainless steel	-	6 10 16 25 40 63	C-cast steel S-stainless steel



DN	50	65	80	100	125	150	200	250	300	350	400	450	500	600	700	800	900	1000	1200	1400	1600	1800	2000
L (F-F, mm)	43	46	49	56	64	70	71	76	83	92	102	114	127	154	165	190	203	216	254	297	318	356	406
Torque (0.6Mpa)	25	29	34	61	104	178	201	353	635	819	1047	1451	2043	2779	3080	3912	5275	6915	12540	24650	40850	48600	60000
Torque (1.0Mpa)	29	35	57	102	165	250	400	518	992	1623	1944	2451	3285	5548	6331	7307	8474	11717	20563	26589	43375	68000	85000
Torque (1.6Mpa)	37	60	81	141	228	450	601	956	1352	2234	2842	3452	4527	6018	6890	8760	9750	13560	22360	34900	48600	92000	114000
Torque (2.5Mpa)	59	82	102	180	289	564	800	1250	1711	2844	3738	4412	5769	9495	14200	19847	26438	35553	38900				
Torque (4.0Mpa)	83	106	148	256	412	790	1202	1862	2428	4067	5533	6454	8253	13443	22720	31755	36188	44113	61962				
Bare stem weight (kg)	6.7	7.5	8	11	16	18	26	37	50	65	95	131	160	245	302	434	608	889	1305				